

## British Crown/City of London Orders Murray-Darling Basin Authority to Depopulate Australia

The just-released Murray-Darling Basin Authority report is the bastard child of two 1994 Australian government official reports, which, on the surface at least, together laid the groundwork for the current drive to shut down Australia's food bowl in order to depopulate the nation.

In reality, these were simply the marching orders of a long-standing policy issued top down from the British Crown and the City of London: that the world's population must be slashed from its present almost 7 billion human beings down to 1-2 billion or even less, and that Australia's population must be slashed to 6-7 million or so. Since Prince Philip founded the Australian Conservation Foundation in 1963 (which he chaired from 1971 to 1976) as a branch of his World Wildlife Foundation, the ACF has led the crusade within Australia for shutting down our agro-industrial capacity, depopulating Australia, and reducing us to feudalism. The ACF, which earlier this year filed a formal complaint with the then Environment Minister and also a two-time ACF president, Peter Garrett, that human population is a "key threatening process" to biodiversity, today shares an overlapping leadership with the notorious Sustainable Population Australia (SPA), which openly calls for reducing Australia's population.

The strategic reality is this: the British Crown/City of London-centered global financial system is disintegrating by the minute, and that British imperial nexus intends to wipe out any and all sovereign nation-states—and therefore their populations—which might pose any resistance to these imperial schemes. And the WWF is at the heart of these British plots: it was founded in 1961 by Prince Philip, who has repeatedly stated that he wants to be reincarnated as a "deadly virus" to "contribute something to solve overpopulation"; a former member of the Nazi SS, Prince Bernhard of the Netherlands; and longtime British Eugenics Society President Julian Huxley, who lamented that the Nazis had discredited the British-originated policy of "eugenics" (imperial rule by a "master race") and that these imperial goals would now have to be "pursued under other language". The so-called Wentworth Group of Concerned Scientists, the gaggle of self-styled scientific "experts" behind the shut-down of the Basin whose members include Tim Flannery and Mike Young, is a front for the WWF.

The MDB accounts for 65% of all Australia's irrigated crops and produces well over one-third of Australia's food; the present cutbacks will slash that capacity far beyond official stated figures. Anyone proposing slashing that capability can have only one goal in mind: genocide, as per Prince Philip and his WWF.

### Tools for genocide: free market, environmentalism

It was tasked to the key Crown operatives Bob Hawke, Paul Keating and John Howard to manage the radical shift to "free market" and "environmental" policies—such as the MDBA plan—that have systematically dismantled Australia's physical economic infrastructure and destroyed the nation's ability to support population growth. Hawke and Keating are prominent members of



Prince Philip, co-founder of the WWF and ACF, wants you to give him a hand.

the Fabian Society, all of whose founders and chief advocates, such as Sidney and Beatrice Webb, Bertrand Russell, H.G. Wells and George Bernard Shaw, were raving advocates of eugenics, who openly proposed the mass murder of millions upon millions of human beings. For example, H.G. Wells in his 1902 book *Anticipations* wrote, "It has become apparent that whole masses of human population are, as a whole, inferior in their claim upon the future, to other masses ... And how will the New Republic treat the inferior races? Well, the world is a world, not a charitable institution, and I take it they will have to go." His

buddy, George Bernard Shaw proposed the use of "the lethal chamber", wherein "A great many people would have to be put out of existence simply because it wastes other people's time to look after them." Hawke's and Keating's successor, John Howard, who continued their policies, is the son of a member of the 1930s pro-fascist paramilitary movement the New Guard, which was organized and financed by City of London bankers to, if necessary, run a coup against the then federal Labor government so as to crush any moves to put the welfare of the people first in economic decision-making during the Depression.

As the Citizens Electoral Council documented in an explosive report published in the September/October 2007 *New Citizen* newspaper, entitled "Howard, ALP Privatising Murray-Darling Water", contrary to the suicidal illusions of many farmers whose political loyalties lie with the Coalition, all three, Hawke, Keating and emphatically Howard, with Rudd and Gillard now included, are responsible for the destruction of the national food bowl. If farmers had acted upon that report at the time, the government and MDBA plan would be defeated by now. Here's how it worked:

Beginning in 1994, the Council of Australian Govern-



ments (COAG) agreed to a “Water Reform Framework”, under the auspices of Paul Keating’s National Competition Policy. This was the agreement to change the status of water from that of a human right, to a tradable commodity, so speculators such as Macquarie Bank—the author and beneficiary of most National Competition Policy “reforms”—could make money by driving up its price, at the expense of food production. This scam could only succeed if water was “scarce”, so the Howard government seized on the drought to impose it.

Also in 1994, following the push for global depopulation at the U.N.’s Cairo Conference, the House of Representatives Committee for Long Term Strategies conducted an inquiry into Australia’s population “carrying capacity”. The resulting report, entitled, “Australia’s Population Carrying Capacity: One Nation, Two Ecologies”, recommended a government policy shift to work toward a range of “politically and socially realistic” population goals that included a preferred option to “stabilise” population at 23 million, but also included an option to reduce population to as low as five million! With an Orwellian flourish, Recommendation 11 stated, “Australia should adopt a consumption strategy, to be developed around the challenge of learning to move from high levels of consumption based on high levels of material throughput per unit of consumption to lower levels of consumption based on lower levels of material throughput per unit of consumption. Such a strategy need not reduce quality of life *although it may change the way in which people enjoy quality lives.*” [emphasis added] Along with a recommendation that a Ministry for Population be created at a Cabinet level—achieved this year with the appointment of Tony Burke as Population Minister, just in time for the MDBA report—the Committee’s overall recommendation was that with regards to population increase, “Australia should adopt a precautionary policy in accordance with the *principles of ecologically sustainable development*”—the exact language of the 2007 Water Act that set the terms of reference for the Murray-Darling Basin Authority (see below). [emphasis added]

These two reports initiated the policy shifts that led directly to the Murray-Darling Basin Authority. Under John Howard, water rights were separated from land title; the Murray-Darling Basin Commission started interstate water trading in 1998; Howard initiated his National Water Initiative in 2003, and the National Water Commission in 2004. Immediately before his sudden resignation in 2007, Victorian Premier Steve Bracks charged that Howard’s actual intent was to privatise all of the Murray-Darling basin’s water. Then on August 2, 2007, NSW’s Minister for Lands and Regional Development Tony Kelly declared, “I am just a little bit worried that this is all about making water another commodity so that Macquarie Bank can be able to buy and sell it and make an absolute fortune.”

Howard’s final action was his 2007 legislation, the Water Act, which established the Authority (later to absorb the separate MDB Commission), and charged it with determining “the volume of water required to maintain and restore environmental assets, using best available science and the *principles of ecologically sustainable development,*” as the report foreword states [emphasis added]. The Water Act captured the spirit of the 1994 Population report: targeting the level of population, by imposing environmental objectives on Australia’s food bowl.

Under fire from angry irrigators at the mid-October public consultation meetings, MDBA chairman Mike Taylor washed his hands of his report’s crushing impact on the food industry, by insisting that the Authority’s task was solely defined by the Act’s environmental objectives, *and not by any con-*

*cern with human beings.* Farmers have to recognise the truth of this, which means that they were set up—yet again—by John Howard’s Liberal/National Coalition!

## Australia unlimited

The intention to depopulate is not confined to the residents of the Murray-Darling Basin; it is targeted at the whole of Australia! The Basin is the national food bowl—it grows the food consumed by millions of people in Australia’s cities, and millions more around the world. The free trade psychosis, that assumes we will simply import our requirements, ignores the fact that there is a global food shortage, due to similar free trade and/or green insanity that has been imposed on most other countries.

However, the Murray-Darling Basin is also the best example of Australia’s potential, if allowed to develop. An area with just six per cent of the nation’s water runoff, utilizes over 80 per cent of it to produce over one-third of the nation’s food. The MDB is being shut down, precisely because it’s successful development over decades, by visionaries and pioneering farmers who weren’t infected by the green ideology and its genocidal obsession with depopulation, disproves the myth that Australia’s inland is a fragile, arid eco-system that can’t be transformed to support industry. Imagine Australia’s potential, if the much higher rain-fall areas of north Queensland, the Northern Territory and Western Australia, were developed along the lines of the Bradfield Scheme, the Reid Scheme, and the Fitzroy River Scheme.

In the same spirit, the Murray-Darling Basin could be even further developed, through integrated infrastructure projects that would revolutionise the system. The late engineering visionary, Emeritus Professor Lance Endersbee, proposed two such projects: the Clarence River Scheme, and the Melbourne to Darwin fast-freight railway. The Clarence River Scheme would catch the floodwaters of the Upper Clarence and its tributaries, and pump about 1000 GL/year over the Great Dividing Range into the Dumaresq River, which will flow into the Barwon River and on to the Darling, generating hydroelectricity on the way. The 24-hour Melbourne to Darwin fast freight train will break the Basin’s dependence upon “tyranny-of-distance” crops, and enable diversification into higher-value horticultural crops, which in turn will improve the efficiency of water use. These examples of visionary development can be easily financed through a national bank, which will transform the entire Australian economy (see diagram).



## Murray-Darling shutdown interferes with nature; who benefits?



Craig Isherwood

The mooted goal of making the Murray River flow out to sea every year, including during drought years, by slashing irrigation in the Murray-Darling basin by up to 37 per cent, is an interference with nature, to kill off people, Citizens Electoral Council leader Craig Isherwood declared today.

“The Greenies are keen to mess with nature to annihilate people; I say let’s improve nature to benefit people,” he said.

Mr Isherwood explained, “It is not ‘natural’ for the Murray to flow out to sea every year. Long before European settlement, and the fairly recent development of the brilliant irrigation

infrastructure that turned the basin into Australia’s food bowl, the Murray and Darling rivers often dried out.

“In 1828, when Charles Sturt travelled down the Darling River, he found the water in places was too salty to drink, and when he reached the mouth of the Murray River he had to turn back because it was closed. In 1923, Victoria’s water commissioner Sir Ronald East was photographed at Nyah (near Swan Hill) standing astride the Murray River, which just was a tiny trickle.

“Dry rivers are not ‘sick’, they simply reflect the state of the biosphere at that point. Rivers are how water, evaporated mostly from the oceans and rained over land, flows back into the ocean again. Any water drawn from a river for irrigation isn’t ‘lost’; it ends up evaporating and returning as rainfall, either somewhere else on land and flowing out to sea through another river, or raining directly into the ocean. What is natural for the Murray is what is happening now: a dry, followed by drought-breaking rains that make the rivers flow again.”

Mr Isherwood accused the Gillard government of betraying Australia by handing policy for the nation’s food bowl over to known population reduction radicals, the so-called Wentworth Group of Concerned Scientists.

“The Wentworth Group is a front for Prince Philip’s World Wide Fund for Nature (WWF) which was established by him and former Nazi Prince Bernhard of the Netherlands to achieve human population reduction,” he said.

“Leading Wentworth Group member Tim Flannery is on record advocating a maximum population for Australia of just 6-7 million, justified by claiming that the ‘fragile’ nature of Australia’s ecosystems means it can’t sustain more than that.

“But that’s a fraud,” he insisted. “The ecosystems are not static. In fact, the Murray-Darling basin is itself an example of how ecosystems can be changed to become more productive, and support a much greater abundance of life. They hate it, because it benefits human beings.”

### The solution

Mr Isherwood said that if the government was serious about looking after both the Murray-Darling system and the welfare of the Australian people, it would build the Clarence River Scheme in north-east NSW.

“The Clarence River Scheme would divert some of the enormous volume of water in the Clarence River over the Great Dividing Range and into the headwaters of the Darling River system,” he said. “It would keep the Darling River full enough for both irrigation and for permanent flows into the Murray River, and further to that would guarantee water for both Adelaide and the lower lakes. The scheme, as devised by the late engineering great, Emeritus Professor Lance Endersbee, would also generate hydroelectricity.”



Mr Isherwood concluded, “This is the kind of creative solution that is possible, if the genocidal ideology behind the push for population-reduction is not part of the government’s decision-making.

“Australia has had enough of this ideology. Before we lose what is left of our food bowl and the decades of investment in blood sweat and tears by the pioneering family farmers who developed it, and the food security that goes with it, I urge Australians to join with the CEC to stop its—and our nation’s—destruction.”

Left: The late Emeritus Professor of Engineering, Lance Endersbee AO, visionary behind the Clarence Scheme.



Sir Ronald East astride the Murray at Nyah during the drought of 1923

# Boost the Murray-Darling Basin: Build the Clarence River Scheme

The Murray-Darling Basin Authority's draft proposal for cuts of 27% to 37% of irrigation in the Murray-Darling Basin for environmental flows is an assault on Australia's greatest food production area. Instead of reducing this production for so called "environmental flows" out to sea, we should be further developing this Basin and greatly increasing its productive output potential.

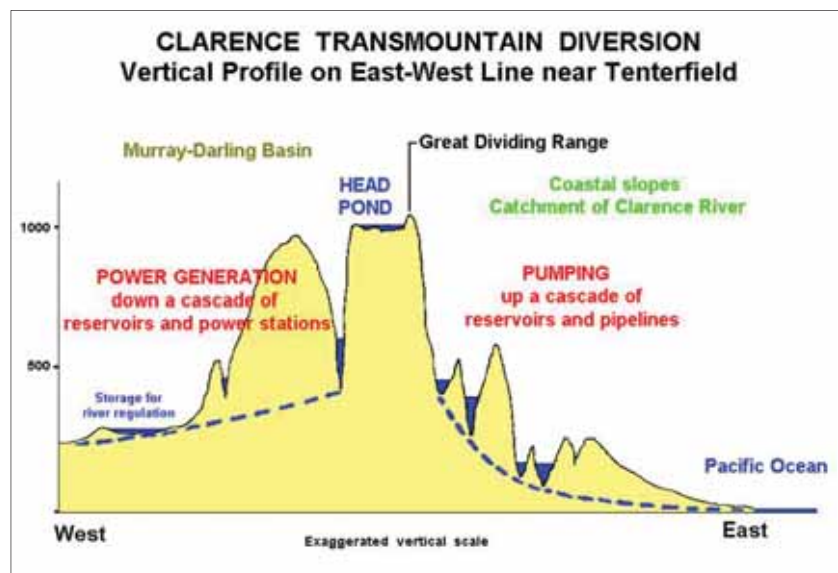
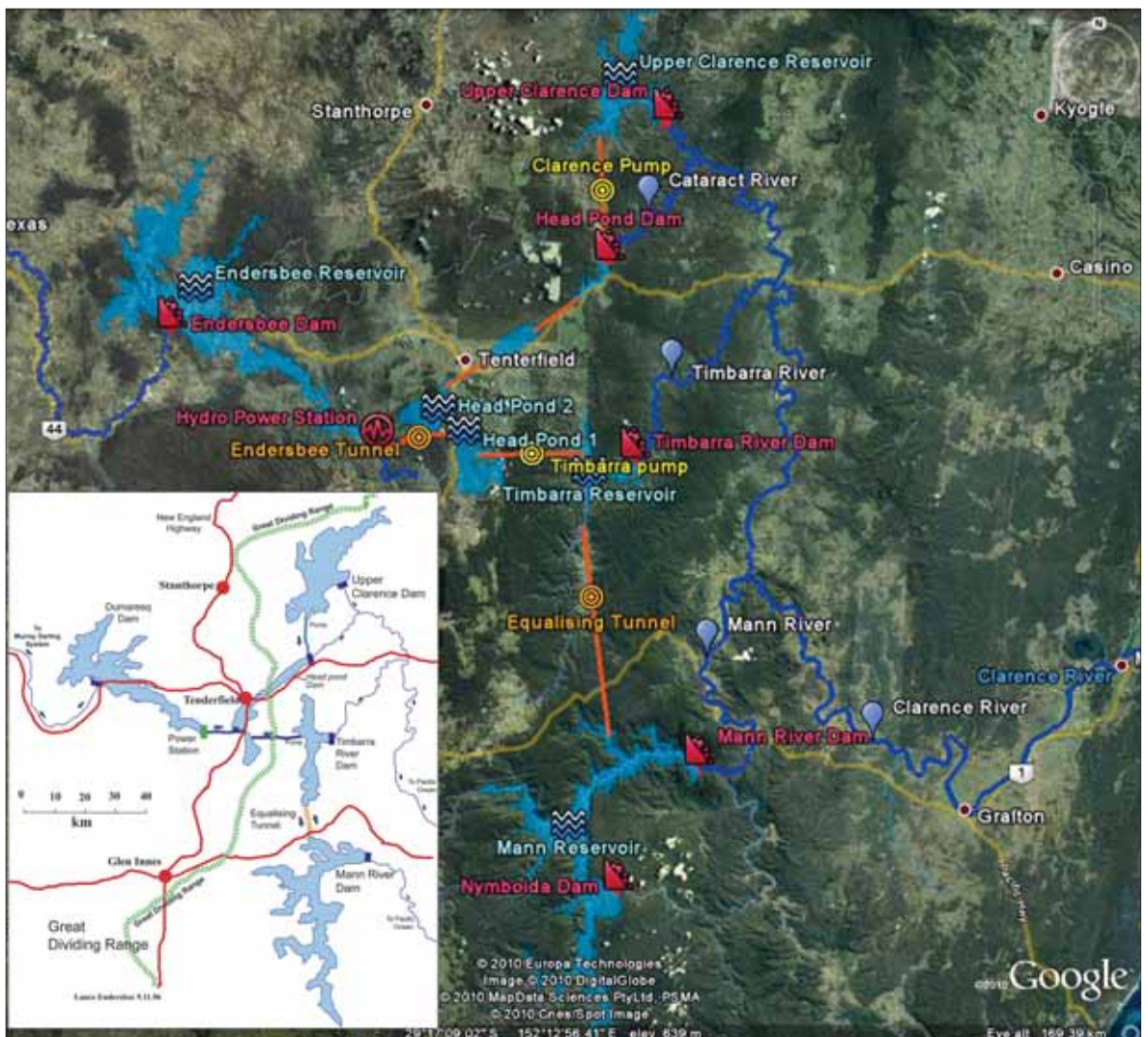
The Clarence River Scheme is a great water project that will provide increased water supply, on the scale of the Snowy Mountains Scheme, to the Murray-Darling system. A concept of this scheme was most recently proposed by Professor Lance Endersbee. His proposal was to take some of the large amounts of annual flood waters in the Clarence River catchment area, pump it over the Great Dividing Range, and then let it flow into the Murray-Darling system. This water project will open up new areas for irrigation along the Dumaresq, Macintyre and Barwon Rivers as well as increasing the water flow into the Darling and Murray Rivers. This increased flow of water into the Darling and Murray Rivers will also flush out the toxic blue green algae that is creating problems in these rivers.

Another proposal by Lance Endersbee is to double production in the Basin by investing in new irrigation systems and canals. This will prevent the water wastage in the present irrigation system, which is also causing salinity problems. By investing in these new irrigation systems (such as drip irrigation) and canals, you can double the irrigation using the same amount of water currently being used.

The Clarence River scheme, as well as increasing food production, will also increase the precipitation in the Murray-Darling area, thus creating more plant life. The increase in agriculture and plant life will make the Murray-Darling basin more habitable for humans and other living organisms as well. So if we are so worried about the environment, why don't we create more life and food production by further developing the Murray-Darling system?

The Citizens Electoral Council will soon be releasing a video on developing the Murray-Darling Basin, which includes the Clarence River Scheme, as opposed to reducing our production, and population.

## Clarence River Scheme



**ACT NOW!**

To join the CEC's mobilisation against the shut-down of Australia's national food bowl, or for more information, including a free copy of the CEC special report, *The Infrastructure Road to Recovery*:

Call the CEC toll-free on 1-800-636-432  
Email at [cec@cecaust.com.au](mailto:cec@cecaust.com.au)  
Clip out this coupon and mail it to:  
CEC Australia PO Box 376 Coburg Vic 3058